

Preventing Backups

*Help maintain a healthy sewer system
in our community*

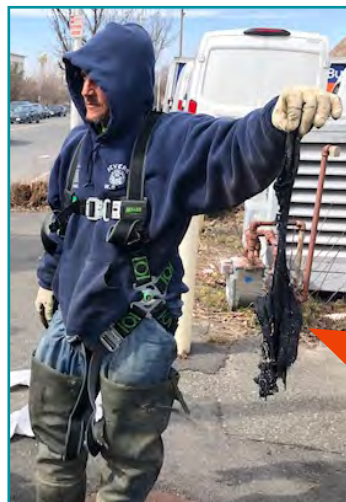
We continue to be proactive in our response to Coronavirus (COVID-19).

Due to this public health emergency our equipment is experiencing blockages from "flushable" and disinfectant wipes.

With the increased use of wipes ("flushable", wet, baby, anti-bacterial, disinfectant) and paper towels, we are reminding all residents to **PLEASE make sure you put these items IN THE TRASH and DO NOT FLUSH them down the toilet!**

DO NOT FLUSH:

- Wet wipes
- Baby wipes
- Anti-bacterial wipes
- Disinfectant wipes
- Paper towels



**YOU
CAN
HELP**

Do your part to prevent costly and time consuming equipment blockages or breakdowns and aid in preventing sewer backups.

QUESTIONS: Contact Us



info@bayshorersa.com
732-739-1095

What Not To Flush

Help maintain a healthy sewer system

We continue to be proactive in our response to Coronavirus (COVID-19).

Due to this public health emergency our equipment is experiencing blockages from "flushable" and disinfectant wipes.

With the increased use of wipes ("flushable", wet, baby, anti-bacterial, disinfectant) and paper towels, we are reminding all residents to

PLEASE make sure you put these items IN THE TRASH and

DO NOT FLUSH them down the toilet!



Safely flush human waste and toilet paper which easily dissolves in water!

DO NOT FLUSH:

- Wet wipes
- Baby wipes
- Anti-bacterial wipes
- Disinfectant wipes
- Paper towels



THE "FLUSHABLE" WIPES MYTH

- Flushable wipes are often marketed as an alternative to toilet paper and claim to be "flushable" and "sewer safe."
- These wipes DO NOT break down when flushed in both private household plumbing and the public sewer system.
- Serious blockages resulting in septic and sewer backups may occur.
- Disposable wipes, even those labeled 'flushable' should be disposed of in the trash, not flushed down the toilet.

QUESTIONS: Contact Us



info@bayshorersa.com
732-739-1095